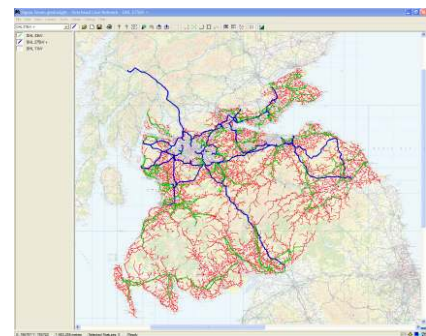
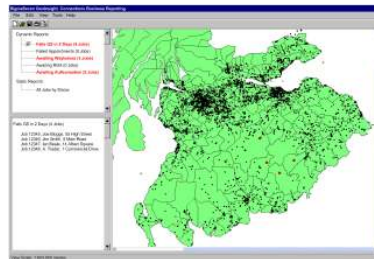
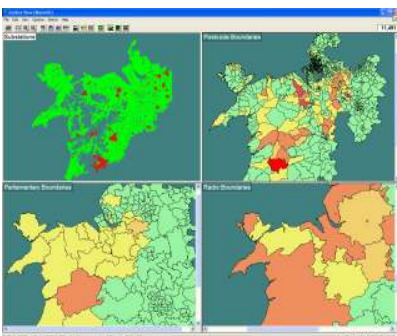


# SIGMA SEVEN



## Geolnsight - Visualise Your Business and See The Results

Sigma Seven's Geolnsight mapping solution provides a rich environment for the geospatial representation of your corporate data. This allows you to understand the patterns, trends and relationships in your business in ways that are not possible through standard reports and data analysis.



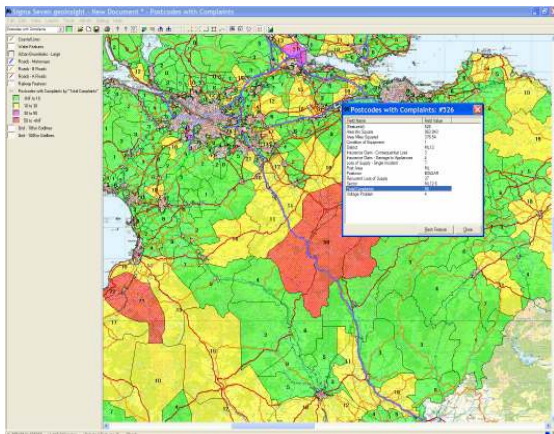
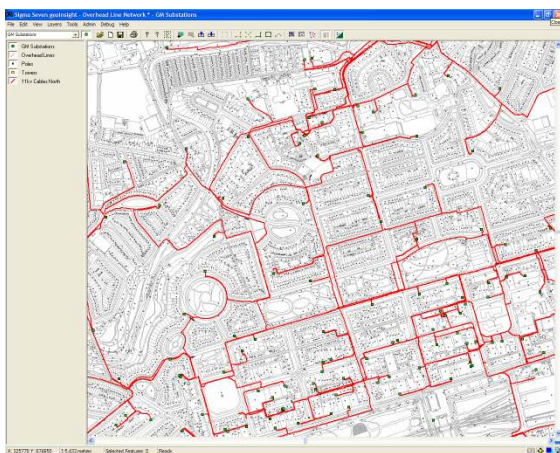
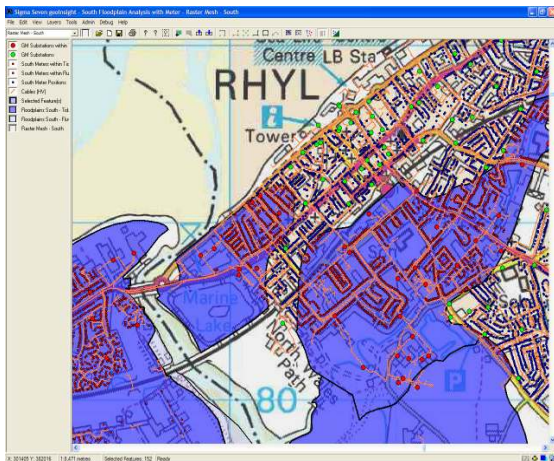
Geolnsight gives users an intuitive and interactive interface to effectively query and analyse your spatial information to aid decision making, planning and many other key business functions. A wide range of data query and thematic display functions give you great flexibility in bringing your maps and data to life.

Geolnsight can be easily integrated into your current information systems to add value to your existing investments in GIS and other business data. Visualisation capabilities can be added to existing business functions or Geolnsight can be used as a stand-alone information analyst tool.

Typical activities in the Utility and Network Asset Management sectors that benefit from Geolnsight include network performance assessment, system planning, impact analysis, regulatory reporting, work programme development and management.

Geolnsight gives you a unique perspective of your data and brings many benefits to your organisation;

- **New insight into your data:** Reveal patterns in data in ways that cannot be achieved through traditional non-geographical analysis and reporting techniques.
- **Enhanced decision making:** Use easily understood location-based information and map your what-if analyses to improve decision making.
- **Improved planning:** Analyse network and customer issues in order to target scarce resources in the most effective way.
- **Better management information:** Identify trends in asset and workforce performance and receive alerts to changes in operational conditions.
- **Increased data value:** Easily visualise your data alongside that from other organisations such as local authorities, environmental agencies and business partners.
- **Greater collaboration:** Share analysis results and maps with colleagues or export data for further use.
- **Enhanced communication:** Create highly effective maps to support your business case or reporting needs.



## Geolnsight Features

Geolnsight offers a comprehensive set of features to enable users to easily manage, analyse and understand your geospatial data:

- Full user control of map display
- Layer management and map feature review
- Geographical data set builder, integrating underlying attributes from corporate and third party databases
- Data import and export from standard data formats including Shapefile, DXF, DWG, OS Landline and Mastermap
- Support for vector and raster mapping
- Dynamic loading of background mapping
- Wizard-driven attribute and spatial queries
- User configurable map styles and display of query results
- Queries and reports run against existing corporate databases
- Map visualisation themes based on attribute values
- Map annotation and red-lining
- User defined layer creation
- Document-based user interface
- Catalogue-based map layer system with underlying meta-data
- Publish layers and query results for access throughout the organization
- Central control of map feature styles and user management
- Export query results to other applications, including Microsoft Excel and Access
- Configurable printing templates

Sigma Seven provides innovative Spatial Information and Map Management solutions to enable your organisation's field and office staff to work more efficiently, deliver significantly improved customer service and enhance the quality and effectiveness of your corporate data. We use our expertise in exploiting the geographical aspects of an organisation's diverse data resources to help businesses use information more effectively.

Our consultants and product specialists have more than 70 man years experience in the Utility and Network Asset Management industries. We have unrivalled in-depth knowledge and understanding of integrated Work and Asset Management systems and a track record of successful project delivery.

For further information contact Sigma Seven:

tel: +44 (0)131 445 5878

email: [info@sigmaseven.co.uk](mailto:info@sigmaseven.co.uk)

web: [www.sigmaseven.co.uk](http://www.sigmaseven.co.uk)